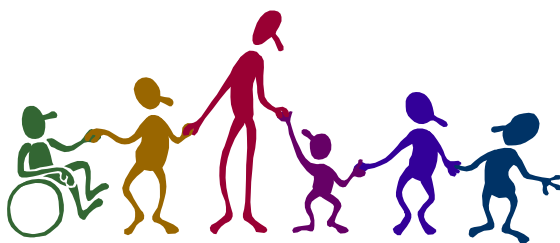


ST BRIDGET'S C of E PRIMARY SCHOOL

Single Equality Plan Policy



Approved by:	SLT and Governors	Date: October 2018
--------------	-------------------	--------------------

Last reviewed on:	December 2017
-------------------	---------------

Next review due by:	September 2020
---------------------	----------------

CRC Links

Article 2 (Non-discrimination): All children have these rights, no matter who they are, where they live, what their parents do, what language they speak, what their religion is, whether they are a boy or girl, what their culture is, whether they have a disability, whether they are rich or poor. No child should be treated unfairly on any basis.

Article 3 (Best interests of the child): All adults should do what is best for the children. When adults make decisions, they should think about how their decisions will affect children.

Article 12(Respect for the views of the child): Children have the right to give their opinion, and for adults to listen and take it seriously.

Article 15 (Freedom of association): Children have the right to choose their own friends and join or set up groups, as long as it isn't harmful to others.

Article 19 (Respect for the views of the child): Children have the right to be protected from being hurt and mistreated, in body or mind.

Article 24 (Health and health services): Children have the right to the best health care possible, safe water to drink, nutritious food, a clean and safe environment, and information to help them stay well.

Article 29 (Goals of education): Children's education should help them use and develop their talents and abilities. It should also help them learn to live peacefully, protect the environment and respect other people.

Article 30 (Children of minorities/indigenous groups): Children have the right to practice their own culture, language and religion - or any they choose. Minority and indigenous groups need special protection of this right.

Article 32 (Child labour): Children have the right to protection from work that harms them, and is bad for their health and education.

Article 36 (Other forms of exploitation): Children have the right to protection from any kind of exploitation (being taken advantage of).

Article 37 (Detention and punishment): No one is allowed to punish Children in a cruel or harmful way

Article 39 (Rehabilitation of child victims): Children have the right to help if they've been hurt, neglected or badly treated.

St Bridget's CofE Primary School Equality Plan

1. Mission statement
2. Mainstreaming equality into policy and practice
3. Equal Opportunities for Staff
4. Equality and the law
 - a. Race
 - b. Disability
 - c. Gender
 - d. Sexual orientation
 - e. Community cohesion
5. Consultation
6. Roles and Responsibilities
7. Tackling discrimination
8. Review of progress and impact
9. Publishing the plan
10. Action Plan

1. Mission statement

Together Everyone Achieves More

At St Bridget's C of E Primary School, we are committed to ensuring equality of education and opportunity for all pupils, staff, parents and carers receiving services from the school, irrespective of race, gender, disability, faith or religion, or socio-economic background. We aim to develop a culture of inclusion and diversity in which all those connected to the school feel proud of their identity and able to participate fully in school life.

The achievement of pupils will be monitored by race, gender and disability and we will use ~~this~~ these data to support pupils, raise standards and ensure inclusive teaching. We will tackle discrimination by the positive promotion of equality, challenging bullying and stereotypes and creating an environment which champions respect for all. At St Bridget's C of E Primary School, we believe that diversity is a strength, which should be respected and celebrated by all those who learn, teach and visit here.

2. ~~Mainstreaming~~ Putting equality into policy and practice

As well as the specific actions set out ~~beneath~~ in this plan, the school operates equality of opportunity in its day to day practice in the following ways.

Teaching and learning

We aim to provide all our pupils with the opportunity to succeed, and to reach the highest possible level of personal achievement. To do this, we will:

- Use contextual data to improve the ways in which we provide support to individuals and groups of pupils;
- Monitor achievement data by ethnicity, gender and disability and ~~action~~ investigate and remedy any ~~gaps~~ inconsistencies;
- Take account of the achievement of all pupils when planning for future learning and setting challenging targets;

- Ensure equality of access for all pupils and prepare them for life in a diverse society;
- Use materials that reflect the diversity of the school, population and local community in terms of race, gender and disability, without stereotyping;
- Promote attitudes and values that will challenge racist and other discriminatory behaviour or prejudice;
- Provide opportunities for pupils to appreciate their own culture and celebrate the diversity of other cultures;
- Seek to involve all parents in supporting their child~~ren~~'s education;
- ~~Encouraging-Encourage~~ classroom and staffroom discussion of equality issues ~~which-that~~ reflect on social stereotypes, expectations and the impact on learning;
- Includ~~ing~~ teaching and classroom-based approaches appropriate for the whole school population, which are inclusive and reflective of our pupils.

Admissions and exclusions

Our admissions arrangements are fair and transparent, and do not discriminate on race, gender, disability or socio-economic factors.

Exclusions occur at a very low level, and will always be based on application of the school's Behaviour Policy. We will closely monitor exclusions to avoid any potential adverse impact and ensure any discrepancies are identified and dealt with.

3. Equal Opportunities for Staff

This section deals with aspects of equal opportunities relating to staff at St Bridget's CofE Primary School.

We are committed to the implementation of equal opportunities principles and the monitoring and active promotion of equality in all aspects of staffing and employment.

All staff appointments and promotions are made on the basis of merit and ability and in compliance with the law. However, we are concerned to ensure wherever possible that the staffing of the school reflects the diversity of our community.

Employer duties

As an employer we need to ensure that we eliminate discrimination and harassment in our employment practice and actively promote equality across all groups within our workforce.

Equality aspects such as gender, race, disability, sexual orientation, gender re-assignment and faith or religion are considered when appointing staff and particularly when allocating Teaching and Learning Responsibilities (TLR) or re-evaluating staff structures, to ensure decisions are free of discrimination.

Actions to ensure this commitment is met include:

- Monitoring recruitment and retention, including bullying and harassment of staff;
- Continued professional development opportunities for all staff;
- Senior Leadership Team support to ensure equality of opportunity for all.

4. Equality and the law

There are a number of statutory duties that must be met by every school in line with legislation from the ~~Race Relations (Amendment) Act (2000), Disability Equality Duty (2005) and Equality Act (2006)~~ Equality Act 2012.

The action plan at the end of this Equality Plan outlines the actions St Bridget's CofE Primary School will take to meet the general duties detailed below.

4a. Race Equality

This section of the plan reflects the general and specific duties of schools as detailed in The Race Relations Act 1976 and as amended by The Race Relations (Amendment) Act 2000.

The General Race Equality Duty requires us to have due regard to the need to:

- Eliminate racial discrimination;
- Promote equality of opportunity;
- Promote good relations between people of different racial groups.

Under our specific duty we will:

- Prepare an Equality Plan which includes our written policy for race equality;
- Assess the impact of our policies, including this Plan, on pupils, staff and parents by ethnicity including, in particular, the achievement levels of these pupils;
- Monitor the impact our plans and policies have on such pupils, staff and parents towards raising the achievement of minority ethnic groups.

4b. Disability

This section should be read in conjunction with the school's Special Educational Needs Policy and Accessibility Strategy.

Definition of disability

The Disability Discrimination Act 2005 (DDA) defines a disabled person as someone who has 'a physical or mental impairment which has a substantial or long-term adverse effect on his or her ability to carry out normal day-to-day activities'.

The DDA 2005 has also extended the definition of disability as follows:

- People with HIV, multiple sclerosis and cancer (although not all cancers) are deemed disabled before they experience the long-term and substantial adverse effect on their activities;
- Section 18 has been amended so that individuals with a mental illness no longer have to demonstrate that it is “clinically well-recognised”, although the person must still demonstrate a long-term and substantial adverse impact on his/her ability to carry out normal day-to-day activities.

Legal duties

The Disability Discrimination Act (DDA) 2005 placed a general duty on schools, requiring them to have due regard for the following when carrying out and delivering services:

- Promoting equality of opportunity between disabled people and other people;
- Eliminating discrimination and harassment of disabled people that is related to their disability;
- Promoting positive attitudes towards disabled people;
- Encouraging participation in public life by disabled people;
- Taking steps to meet disabled people’s needs, even if this requires more favourable treatment.

Under our specific duty we will:

- Prepare and publish an Equality Plan which covers the requirements for a Disability Equality Scheme identifying our disability equality goals and actions to meet them;
- Review and revise this Scheme every three years.

Formatted: Keep with next

4c. Gender Equality

The Gender Equality Duty ([extended in 2007](#))⁶ places a general and specific duty on schools to eliminate unlawful discrimination and harassment on the grounds of gender and to promote equality of opportunity between female and male pupils and between women and men and transgender people.

Under our general duty we will actively seek to:

- Eliminate unlawful discrimination and harassment on grounds of sex and gender reassignment;
- Promote equality between men and women.

Under our specific duty we will:

- Prepare and publish an Equality Plan which covers the requirements for a Gender Equality Scheme identifying our gender equality goals and actions to meet them;
- Review and revise this Scheme every three years.

4d. Sexual Orientation

The Equality Act 2006 made provision for regulations to be introduced to extend protection against discrimination on grounds of religion or belief to sexual orientation.

The Equality Act (Sexual Orientation) Regulations 2007 came into force on 30 April 2007, and they make discrimination unlawful in the area of goods, facilities and services on grounds of sexual orientation. For schools this means admissions, benefits and services for pupils and treatment of pupils.

4e. Community cohesion

The Education and Inspections Act 2006 inserted a new section 21(5) to the Education Act 2002, introducing a duty on the governing bodies of state schools to promote community cohesion. Community cohesion encompasses promoting good relations between pupils from different races, faiths / beliefs and socio-economic backgrounds. The duty came into force on 1 September 2007.

5. Consultation and involvement

It is a requirement that the development of this plan and the actions within it have been informed by the input of staff, pupils and parents and carers. We have achieved this by using the following to shape the plan:

- Feedback from the annual parent questionnaire, parents' evenings, parent-panel meetings or governors' consultation meetings;
- Input from staff surveys or through staff meetings / INSET;
- Feedback from the school council, PSHE lessons, whole school surveys on children's attitudes to self and school;
- Issues raised in annual reviews or reviews of progress on Individual Education Plans/Provision Maps, mentoring and support;
- Feedback at Governing Body meetings.

6. Roles and Responsibilities

The role of governors

- The governing body has set out its commitment to equal opportunities in this plan and it will continue to do all it can to ensure that the school is fully inclusive to pupils, and responsive to their needs based on race, gender and disability.
- The governing body seeks to ensure that people are not discriminated against when applying for jobs at our school on grounds of race, gender, ~~or~~ disability, sexual orientation, gender re-assignment, faith or religion.
- The governors take all reasonable steps to ensure that the school environment gives access to people with disabilities, and also strive to make school communications as inclusive as possible for parents, carers and pupils.
- The governors welcome all applications to join the school, whatever a child's socio-economic background, race, gender, ~~or~~ disability, sexual orientation, gender re-assignment, faith or religion.
- The governing body ~~ensures~~ seeks to ensure that no child is discriminated against whilst in our school on account of their race, gender, disability, sexual orientation, gender re-assignment, faith or religion ~~race, sex or disability~~.

The role of the headteacher (or senior leader responsible for Equalities)

- It is the headteacher's role to implement the school's Equality Plan and s/he is supported by the [Deputy Headteacher and](#) governing body in [so doing](#).
- It is the headteacher's role, [supported by the Deputy Headteacher](#), to ensure that all staff are aware of the Equality Plan, and that teachers apply these guidelines fairly in all situations.
- The headteacher ensures that all appointments panels give due regard to this plan, so that no-one is discriminated against when it comes to employment or training opportunities.
- The headteacher, [supported by the Deputy Headteacher](#), promotes the principle of equal opportunity when developing the curriculum, and promotes respect for other people and equal opportunities to participate in all aspects of school life.
- The headteacher treats all incidents of unfair treatment and any incidents of bullying or discrimination, including racist incidents, with due seriousness.

The role of all staff: teaching and non-teaching

- All staff will ensure that all pupils are treated fairly, equally and with respect, and will maintain awareness of the school's Equality Plan.
- All staff will strive to provide material that gives positive images based on race, gender and disability, and challenges stereotypical images.
- All staff will challenge any incidents of prejudice, racism or homophobia, and record any serious incidents, drawing them to the attention of the headteacher.
- Teachers support the work of ancillary or support staff and encourage them to intervene in a positive way against any discriminatory incidents.

7. Tackling discrimination

Harassment on account of race, gender, disability ~~or~~ sexual orientation, [faith or religion](#) is unacceptable and is not tolerated within the school environment.

All staff are expected to deal with any discriminatory incidents that may occur. They are expected to know how to identify and challenge prejudice and stereotyping; and to support the full range of diverse needs according to a pupil's individual circumstances.

Racist and homophobic incidents and other incidents of harassment or bullying are dealt with by the member of staff present, escalating to a class teacher / [deputy](#)/ headteacher where necessary. All incidents are reported to the headteacher and racist incidents are reported to the governing body and local authority on a termly basis.

What is a discriminatory incident?

Harassment on grounds of race, gender, disability, sexual orientation, [faith or religion](#) or other factors such as socio-economic status, can take many forms including verbal or physical abuse, name calling, exclusion from groups and games, unwanted looks or comments, jokes and graffiti.

A racist incident is defined by the Stephen Lawrence Inquiry Report (1999) as:
'any incident which is perceived to be racist by the victim or any other person'.

Types of discriminatory incident

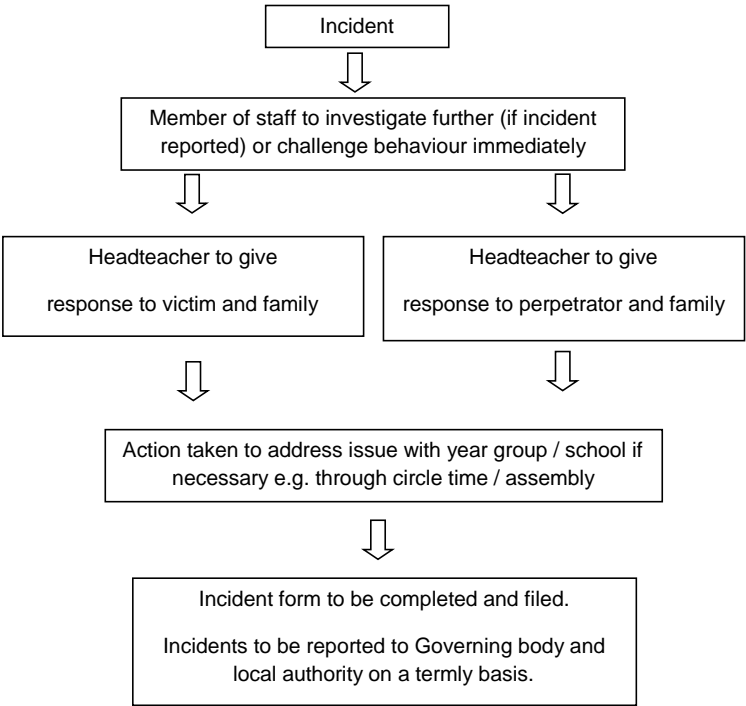
Types of discriminatory incidents that can occur are:

- Physical assault against a person or group because of their colour, ethnicity, nationality, disability, sexual orientation or gender;
- Use of derogatory names, insults and jokes;
- Racist, sexist, homophobic or discriminatory graffiti;
- Provocative behaviour such as wearing racist, sexist, homophobic or discriminatory badges or insignia;
- Bringing discriminatory material into school;
- Verbal abuse and threats;
- Incitement of others to discriminate or bully due to victim's race, disability, gender or sexual orientation;
- Discriminatory comments in the course of discussion;
- Attempts to recruit others to discriminatory organisations and groups;
- Ridicule of an individual for difference e.g. food, music, religion, dress etc;
- Refusal to co-operate with other people on grounds of race, gender, disability or sexual orientation.

Responding to and reporting incidents

It should be clear to pupils and staff how they report incidents. All staff, teaching and non-teaching, should view dealing with incidents as vital to the well-being of the whole school.

A suggested procedure for responding and reporting is outlined below:



8. Review of progress and impact

~~The~~This Plan has been agreed by our Governing Body. We have a rolling programme for reviewing our school policies and their impact. In line with legislative requirements, we will review progress against our Equality Plan annually and review the entire plan and accompanying action plan on a ~~three year~~three-year cycle.

We make regular assessments of pupils' learning and use this information to track pupil progress. As part of this process, we regularly monitor achievement of ALL children, for this plan we monitor specifically by ethnicity, gender and disability, to ensure that all groups of pupils are making the best possible progress, and take appropriate action to address any ~~significant gaps~~irregularities.

9. Publishing the plan

In order to meet the statutory requirements to publish a Disability Equality Scheme and Gender Equality Scheme, we will:

- Publish our plan on the school VLE;
- Raise awareness of the plan through the school newsletter, assemblies, staff meetings and other communications;