
*St Bridget's C of E (Controlled)
Primary School
West Kirby*



1825-2022

School Vision Statement

Inspiring, nurturing and educating our children to serve God by reaching their full potential, serving our local community and by looking after our environment as global citizens of today and tomorrow.

School Mission Statement

'Love your neighbour as yourself.'

Luke 10:27

School Core Values

'Faith, Hope and Love'

1 Corinthians 13:13

School Values to Support Learning and Behaviour

Truthfulness, Creativity, Compassion, Friendship, Teamwork, Respect, Perseverance, Responsibility

School Aims

To provide a school that supports children's development through its' Christian foundation.

To create an environment in which each child's potential can be realised, academically, socially, creatively, physically and spiritually.

To organise a safe and happy school where everyone is valued and respected and their individual qualities and creativity are recognised and celebrated.

To build a team of experienced committed and caring staff with a broad range of expertise and meeting the needs of the children.

To work with all members of the school community to provide challenging learning targets appropriate to each individual child.

To develop the children with a broad and balanced curriculum in order to create a firm foundation for children's future education and life.

To encourage all children to adopt and maintain safe and healthy lifestyles.

To foster in children, the qualities of self-belief, care and consideration for others, and to encourage high expectations in all areas of school life, in order to equip them to be good citizens for the future



After Ofsted Inspection in January 2013 St. Bridget's Primary was judged to be outstanding in all areas.

A full report is available from the school website.

"All pupils achieve extremely well and reach standards that are well above average in English and Mathematics. The rates of progress pupils make are more rapid than at the time of the previous inspection.

Teaching promotes outstanding learning and progress. Careful planning and attention to individual needs mean that all pupils thrive and want to learn.

Excellent support for disabled pupils and those who have special educational needs ensures that they make very good progress and are fully included in the school.

Pupils' behaviour is excellent. They are polite, considerate and work hard. Older pupils carry out many roles and responsibilities and this prepares them well for their future lives. They know and understand how to keep themselves safe."



On 01 February 2018 the Diocese of Chester conducted an inspection and judged the school to be outstanding in all areas. A full report is available from the school website.

- The distinctiveness and effectiveness of St Bridget's as a Church of England school are outstanding
- School leaders have a compassionate and highly ambitious Christian vision for the school community, leading to a shared culture of purpose and achievement.
- Spiritual, moral, social and cultural development is woven through school life. The school's Christian character promotes a deeply held respect for diversity and equality. Pupils are strong advocates for social justice.
- Collective worship is highly valued and themes inspire a deep level of spiritual and moral reflection which impacts strongly on pupils' personal development.
- The school is highly valued by its community. Partnerships are exceptionally strong, inclusive and mutually beneficial.

St Bridget's C of E Primary School

Index

School Vision Mission Statement School Core Values/ to Support Learning & Behaviour School Aims Ofsted Report Church Inspection (SIAM)	Page 1
Introducing our Staff	Page 3
Pastoral Care & Discipline Equal Opportunities and Accessibility Special Educational Needs	Page 4
School Curriculum Homework	Page 5
Admissions Policy School Meals & Free School Meals Drinks & Snacks	Page 6
Governors Parents' Association	Page 7
Christian Ethos Committee Sport Extracurricular Clubs School travel Plans	Page 8
The Arts School Visits St Bridget's Buddies - Before & After School Club	Page 9
School Day, Things You Need to Know	Page 10
School Uniform	Page 11
Our School Photographs	Page 12
School Term Dates	Page 13
Plan of school	Page 14
School Zone List	Page 15
St Bridget's History	Page 16 & 17
Privacy Notice Information	Page 18

This prospectus provides an introduction to St Bridget's School; further information is available from school or our school website.

Any parent wishing to see our headteacher should telephone the school or write to make an appointment. Visits for prospective parents may also be arranged in this way.

General information about all schools in Wirral is available from Metropolitan Borough of Wirral, Education Department, Hamilton Building, Conway Street, Birkenhead, CH41 4FD.

Tel No: 0151 606 2000.

Pupil Services Tel No: 0151 666 4221.

Website: <https://www.wirral.gov.uk/schools-and-learning/school-admissions/apply-primary-or-secondary-school-place>

School Website/VLE: <http://www.stbridgets.wirral.sch.uk/website>

Information is also available in public libraries. The information contained in this document relates to the current school year and, although correct at the time of publication, it should not be assumed that there would be no changes before the start of, or during the next school year.

The prospectus is also available at: <http://www.stbridgets.wirral.sch.uk/website/prospectus/31380>



St Bridget's C of E (Controlled) Primary School

for Children aged 4 to 11 years - 434 on roll May 2021

Headteacher

Mr N Le Feuvre

Deputy Headteacher

Mr R Neal

Assistant Head

Mrs R Ross

Teaching Staff

Mrs L Ashton	Mrs I Longmore
Mrs J Butler	Mrs V McDowell
Mrs Coakley-Hines	Mrs K Nickson
Miss R Cotterell	Mrs V Neal
Mr A Coughlin	Mr R Neal
Mrs S Darby	Mr A Owen
Miss C English	Mrs R Ross
Mrs N Inglis	Mr A Ryan
Ms S Job	Ms K Sadler-Jones
Ms A Kirkby	Miss N Smith
Mrs C Lacey	Mrs T Taziker

Support Teaching Staff

PPA Staff - Mrs Holloway

Teaching Assistants

Mr M Biggins - Miss A Broughton - Mrs P Carroll-Vickers - Mrs J Champion - Mrs J Coughlin
Mr R Green - Miss E Grisdale - Mrs C King - Mr J Nolan - Miss A McHattie - Mrs S McHattie - Mrs L McLeod
Mrs J Paterson - Mrs C Redgrift - Miss H Roberts - Mrs C Warburton - Mrs N Ward

St Bridget's Buddies

Manager: Mrs C Redgrift - Miss E Drew - Miss K Gerrad

Office Manager

Mrs P Emery

Admin Staff

Miss S Marriott - Miss J Singleton - Mrs M Pilkington

Clerk to the Governors

Miss S Marriott

Caretaker

Mr S Wilkins

Kitchen

Catering Manager - Mrs J Mountain **Cashier** - Mrs D Robinson
Senior Lunchtime Supervisor - Mrs J Paterson.

Pastoral Care & Discipline



To ensure that your child's interests are best served we hope for maximum co-operation between school and home. All parents can see the class teacher or head-teacher whenever necessary, subject to availability. School promotes positive behaviour through implementation of the behaviour policy. Most sanctions against children take the form of additional work at playtime or lunchtime, loss of some outdoor play or the loss of Well-Being Time (previously known as Golden Time).

We have two Parents' Meetings each year to discuss your child's progress with their teacher(s). Appointments are sent out in advance and we encourage attendance. Key Stage Two children are invited to join their parents at these meetings, however, this is at the discretion of the parents.

Due to the pandemic some aspects of school policy and practice have been changed temporarily. This includes how to enter and leave school as well as how we carry out day to day activities in school. More detail about this will be provided from September 2020 onwards.

Equal Opportunities & Accessibility

In line with the school's commitment to the needs of individual pupils, all subjects within the National Curriculum are open to all pupils, no matter their gender, on an equal basis.

All children regardless of disability or ethnicity will be provided with the same opportunities to learn.

We will endeavour to make all aspects of school life accessible to every child within our care.

We have two stair lifts and an external ramp to enable accessibility to all parts of the school.

We also have a medical room designed to support children with specific needs.



Special Educational Needs



Our aim is to ensure that we meet the needs of all individuals within our school. Occasionally, some children experience greater difficulties than average to those in the same age group; these children are then offered extra support in their work and may sometimes be identified as having Special Educational Needs (SEN).

Our school follows the SEND criteria set by the Local Authority. We implement the **SEND Code of Practice** and children with difficulties are placed on the school **SEND register**, which is confidential to teachers and parents. Their progress is closely monitored and reviewed at regular intervals by our **SEND Co-ordinator**, the Local Authority **SEND Support Service** and **parents**. School is also able to access many support agencies in order to support children with specific difficulties.

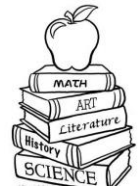
Work and teaching practice, such as questioning in class, is **differentiated** in order to meet the needs of all children, including the most able. Wherever possible, children with SEND are supported in their work. Most of the time this occurs within the classroom, but on occasions it may be necessary to withdraw children individually or in a small group.

The Local Authority supports children with an Education Healthcare Plan or Pupil Funding Agreement and school is happy to work alongside the specialist support teachers in devising and implementing **Additional Support Plans (ASP)** in accordance with the Code of Practice.

Parents are invited to discuss the Support Plan/s. To ensure continuity SEN records are held by the class teacher and SENCo, these are available for parents to view by appointment with school.

For any further details, see our website: http://www.stbridgets.wirral.sch.uk/website/send_info/31281

The Curriculum



At St Bridget's CE Primary School, we aim to give each child the best possible education. A conscientious, caring staff makes an excellent blend of traditional and modern teaching methods.

In line with the **National Curriculum** we cover the core subjects:

ENGLISH (reading, writing, grammar, punctuation, spelling (GPAS) and speaking & listening), **MATHS** and **SCIENCE**, as well as the foundation Subjects: **History, Geography, Computing, Design & Technology (D&T), Music, Art, Physical Education (PE), Religious Education (RE)* & MLF (Modern Foreign Language).**

The children are assessed at two stages in the primary sector; at the end of both Key Stage 1 (Year 2/ages 6-7) and Key Stage 2 (Year 6/ages 10-11). Assessment will, of course, be continuous throughout the stages, but reported to the Department of Education (DfE) at the end of each Key Stage. For each subject and each Key Stage, programmes of study set out identifying what the pupils should be taught and attainment targets set out the expected standards of pupils' performance. Detailed guidelines in all subjects have been issued and school has schemes of work based on these. Some of the work in the foundation subjects will be covered in a cross-curricular manner via topic work, but there will be some specific areas that must be covered by individual year groups as mini-topics.

In addition, all children use technology regularly. We have 34 computers in our computer suite, and 58 iPads that connect via Wi-Fi. We ensure that children have regular opportunities to use them, aiming towards computer literacy.

At our school we follow the HEARTSMART Scheme of Work to support pupil's emotional development and relationships. HEARTSMART is a primary school resource that builds resilience, emotional intelligence and active empathy in the hearts of children. It is a creative way of enabling children to adopt a growth mindset whilst maintaining a healthy emotional epicentre. It works on the idea that meaning comes from relationships and every child is worthy of relational connection. HEARTSMART is therefore about loving and accepting ourselves as well as loving and responding well to others. The HEARTSMART programme is a 'whole school' approach where the children focus on a particular topic each half term, these are:

- Get HEARTSMART
- Don't Forget to Let Love In!
- Too Much Selfie isn't Healthy
- Don't Rub it in Rub it Out!
- Fake is a Mistake!
- No Way Through isn't True

These lessons are carried out through a variety of learning styles and often include a cross-curricular approach whilst maintaining a positive biblical link.

St Bridget's is a Rights Respecting School. Our pupils are made aware of the United Nations Convention of Rights of the Child (CRC) and as a school, we focus on the different articles of the CRC.

In order to support our pupil's relationships and sexual education a sensitive programme of work is delivered in Years 5 and 6.

In addition, we enjoy the services of peripatetic teachers of the violin, drums/percussion and guitar instruments for interested, musical Year 3 children onwards. Children can also learn to play other instruments e.g. recorder and ukulele. The children at St Bridget's get an opportunity to hear concerts and see plays when performers visit the school. All children make at least one educational visit a year, depending upon the studies being undertaken.

Chess is taught in Year 3 on a weekly basis through our chess coach provided by 'Chess in Schools and Communities'. Chess promotes key academic and social skills that children will use throughout their lives. The game helps them to think logically and solve problems, it develops sportsmanship and resilience and it teaches children to plan ahead and take responsibility for their actions.

We aim to provide the broad base on which later education will be founded. It is in the primary stage when education can be given a more individual approach and many opportunities are available for children to work at their own rate.

Parents are invited twice a year to discuss their children's progress with the class teacher and/or see their work. However, it is possible to make an appointment to see either the class teacher or headteacher should interim problems arise.

* School has devised a scheme of work for RE using both the Local Authority Agreed Syllabus and the Chester Diocesan Guidelines. Further information can be obtained from our Headteacher.

Further information on our curriculum vision, intent, implementation and impact can be found on the school website at:

https://st-bridgets.eschools.co.uk/website/curriculum_/70096



Homework

Homework is set on a regular basis, and all children will be expected to practise reading and to learn spellings and tables. Other work to be done at home will tend to involve research work for topics, book reviews, remedial, and supplementary work. Homework is normally given on a weekly basis to allow flexibility for after-school activities. We endeavour to use playtimes and lunchtimes to complete unfinished class work, but if necessary, this will be sent home for completion for the next day.

We expect the children to work as hard as they can within school hours and this consistent effort will ensure that they have covered all the work required by both the National Curriculum and secondary schools.

Parents can help considerably if they encourage these activities and provide a quiet environment for the children to work at home. We ask that their work is checked, especially for legibility and neatness and counter-signed by a parent when appropriate.

Admissions Policy

WIRRAL

St Bridget's C of E Primary School is a Voluntary Controlled school. The admission arrangements are the same as in Community schools where the **Local Authority is responsible for all admissions**.

RECEPTION (FOUNDATION 2)

Children usually start school in the school year (September - August) in which they will have their 5th birthday. Parents will be required to apply for a place at our school between the beginning of September and mid-December in the school year before they are due to start school (If your child is 5 between 1 September 2022 and 31 August 2023 you will need to apply for a place at our school between September and December 2021) **this is done through the Local Education Authority and not by school**.

Children whose parents have applied in this way and live in our catchment area ¹ will most likely be offered a place. The new code of admissions however means we cannot guarantee this, due to variations in parental preferences.

We have 60 places available each year in Foundation Stage.

KEY STAGE 1 (YEARS 1 & 2)

Children whose parents wish them to join our school during these years, and live in our zone will be granted a place only if there are less than 30 in these classes (60 in the year group) - **THIS IS A GOVERNMENT MANDATE**.

Again, children living in the catchment area will have priority.

KEY STAGE 2 (YEARS 3, 4, 5 & 6)

Children requiring a place in one of these years, and who live in the catchment area, will usually have a place.

OUT OF ZONE ADMISSIONS

All families who request an out of zone admission place will be considered for a place only if there are vacancies.

Out of zone applications will be given priority by the Local Authority in the following order:

- children who are looked after by a local authority;
- children with brothers or sisters currently at the school;
- children with particular medical or social needs;
- children living nearest to the school (but out of area).

Further information about school admissions can be obtained from **Pupil Services** on 0151 666 4221



School Meals

St Bites Kitchen



We have a desire to provide the best quality food and service at an affordable price. We are able to cater for all dietary requirements, be it allergy or personal choice. The wide and varied menu is run over a 4 week period and can be found on the school website.

Currently the cost is £2.05 for lunch without a drink (water is available on each dinner table).

The cost for lunch is payable via our online payments system  **ParentPay** each child will be given a personal log on for parents to use.

Please note that all Key Stage 1 children are now entitled to a **Free School Meal**. Alternatively, your child may bring a **packed lunch**. All packed lunches need to be sent in a container that is clearly named, so they can be safely stored in the classroom during the day. No sweets, nuts or fizzy drinks are allowed.

Any parent in either KS1 or KS2 requiring consideration for free school meals should contact the Schools Welfare Section at Hamilton Building, Conway Street, Birkenhead by calling 0151 606 2002 alternatively Parents can apply online

at: <https://www.wirral.gov.uk/schools-and-learning/funding-and-financial-support/free-school-meals-pupil-premium>

or use the form available on the school website at: https://st-bridgets.eschools.co.uk/website/school_lunches/216470

Parents should claim for free school meals IF they meet the eligibility criteria EVEN if their child would receive a free school meal anyway under Universal Infants.

Drinks & Snacks

Children in Reception have a mid-morning drink of milk (free) or water. **Children in Year 1** can have milk at mid-morning break if they wish (paid for termly). Each day fruit or a vegetable is provided for children in **Reception, Year 1 & 2** - usually apples, small oranges, pears or bananas, carrots or tomatoes. All children are encouraged to bring bottled water in named containers.

¹ See Page 15



Chair of Governors – Dr Alex Owen

Vice Chair – Mr David Pastor

Our Governing body, was re-constituted on 7th July 2015 under new Government regulations and now comprises of:

4 Foundation Governors

Rev. Alex Williams
Mrs Imogen Longmore
vacancy
vacancy

6 Parent Governors

Dr Alex Owen
Mr David Pastor
Mr Doug Janikiewicz
Dr Kevin Crawford
Mrs Chistine Morgan
Mrs Emma Nadiem

3 Co-opted Governors

Mrs Sarah Collins
Mrs Kate Brandreth

1 Local Authority Governor

Mrs Victoria Cassidy

1 Headteacher Governor

Mr Neil Le Fuvre

1 Staff Governor

Mrs Lyndsay Ashton

Clerk to the Governors

Miss Sheenah Marriott

Currently, we also have 1 Associate Governor.

Parent Governors are nominated and appointed by school parents and when necessary an election for a new parent governor would take place. Further details about our governors is available in school or on the school website.

Contact for all our governors is via the Clerk to the Governors or school office or on: - 0151 625 7652



St Bridget's School Parents' Association as was formed in April 1980, the membership includes all parents and some members of staff represented by an elected committee. The aims of the P.A. are primarily social and fund raising with the help of parents throughout the school. There are a great number of events organised by the P.A. from craft projects, raffles, competitions, children's discos, a family BBQ and the Christmas Bazaar right through to evening socials and formal dinner dances. The events are always fabulously well attended and make for brilliant ways to meet other parents as well as helping to raise money to enrich school life for all. Recently, the parents of the school, through the Parents' Association, have raised funds to help provide a wide variety of equipment that might not be readily available through the normal funding channels. The two playgrounds have had significant makeovers including the addition of a beautiful garden and thermoplastic court lines and play diagrams which have been a huge hit with children, staff and parents alike. New uniforms for the talented children of the choir, learning resources, bike/scooter racks, computers, iPads, chess clocks, football goals and netball nets, lighting for school plays and concerts, learning/play equipment for reception, a replacement wooden gazebo and the outdoor wooden play equipment have all been purchased through funds raised at various Parents' Association events.

Your continued support and enthusiasm will mean that these added extras can continue to be provided for the benefit of the children at St Bridget's.

The P.A. Annual General Meeting is held in October. All parents, new and existing, are very welcome to attend. There is also an informal new parents' welcome evening where you can come along to meet the committee members and existing parents and ask any questions you may have. If you have an idea for fundraising you don't have to be a committee member to set it in motion, simply contact the P.A. and someone will be more than happy to help you get it started or give you advice on what to do next. Anything you can do to help has a huge impact on the success of the Parents' Association. Welcome to St Bridget's, we look forward to seeing you.

Contact us at: stbridgetspa@gmail.com

Facebook- St Bridget's Parents Association Group



Minutes
from our
meetings!

Christian Ethos Committee

At St Bridget's our pupils' voice is held in high esteem.

- Is run, with teacher supervision by children representing each year.
- Children across the school are voted on to Committee.
- The members of the committee meet regularly to discuss topics that are felt to be important to the pupils.
- They organise campaigning activities to support charities, purchase playground and other equipment.
- The Christian Ethos Committee automatically form part of our Rights Respecting Steering Committee.



Sport

St Bridget's has been awarded the 'Goldmark School Games Award' in recognition of the school's provision both within and beyond the curriculum. We have always taken a full part in inter-school sporting activities, we feel this is an important part of our personal and community involvement both during and after school. Children also take part in a range of Inter-class and Inter-house competitions (e.g. Handball, Hockey, Boccia, New Age Kurling, and Tag-Rugby).

In Years 3, 4 & 5, all the children have daily swimming lessons during a two-week block (in each of these years). Pupils regularly take part in the Wirral Primary Schools Swimming Galas.

We have represented Wirral at the Merseyside County Finals in recent years in Indoor/Outdoor Athletics and Gymnastics, hockey, Boccia and Kurling.

We enter local football tournaments and have previously competed in Wirral Schools Quicksticks, Netball, Athletics and Tag Rugby. We also compete against other schools in a large range of sports such as Handball, Footgolf and Trigolf, through our collaboration with Edsential.

During 2009/10 we became a 'Bike It School' with the full support of the Charity Sustrans; we had already achieved the Bronze Award and gained the Silver Award in 2013.

All Children are taught Gym, Dance and Games. The Key Stage 2 children are taught a variety of team games including: Football, Netball, Rounders, Rugby, Hockey, Athletics and O.A.A.

Extra-curricular activities which include: athletics, maypole dancing, football and cross-country are available during the year. We also offer before and after school courses in a range of sports such as Judo, Fencing, Karate, Street dance, Basketball, Tennis, Cricket, Handball, Gymnastics and Multiskills amongst others.



Extra Curricular Clubs



Throughout the year a variety of extra-curricular activities are offered to children across our school.

Some of these are provided free of charge and run by school staff, some are chargeable and are delivered by outside providers. These are run before school, at lunchtime or after school.

We aim to provide a variety of extra experiences and challenges to complement our school curriculum. Activities are usually targeted at particular age groups and are run for a half term.

Activities offered during 2019-2020 included: - sport, martial arts, gymnastics, dance, chess, choir and French.

Our School Travel Plans

Our school has a "Travel Plan" which has been established in an effort to reduce car congestion around the area of the school, to increase school safety and encourage more families to walk to and from school. **We operate a voluntary "ONE WAY SYSTEM" along Ludlow Drive, at the beginning and end of our school day.** Please enter Ludlow Drive at the entrance to Sandy Lane and exit on to Village Road.

Attention must also be drawn to the dangers for the children caused by a small number of thoughtless drivers (often parents) parking in the vicinity of the school. As a result, between 8.45/9.00am & 3.15/3.45pm, the immediate area will be closed with cones provided by the police. Traffic wardens regularly visit the roads on either side of the school at the beginning and end of the school day. Please help us to safeguard our children by parking considerately and walking the short distance. Your child's safety is of paramount importance to us all and there is no space for cars by the school gates, especially at the times when the majority of children arrive and leave.

PARENTS ARE REQUESTED TO MEET CHILDREN ALL CHILDREN IN THE JUNIOR PLAYGROUND AFTER SCHOOL.

Foundation Stage (Reception) children are brought to the playground by their teacher at 3.20pm ~ KS1 children are brought to the playground by their teacher at 3.25pm ~ KS2 children are brought to the playground by their teacher at 3.30pm.

ANY CHILD NOT COLLECTED WILL BE BROUGHT BACK INTO SCHOOL TO AWAIT THE PARENT/CARER'S ARRIVAL.



The Arts



Article 29 (goals of education) Education must develop every child's personality, talents and abilities to the full. It must encourage the child's respect for human rights, as well as respect for their parents, their own and other cultures, and the environment.

Article 31 (leisure, play and culture) Every child has the right to relax, play and take part in a wide range of cultural and artistic activities.

At our school, our Mission Statement, Vision Statement and School Values permeate every aspect of school life, a crucial part of fulfilling our aims, vision and values is our role as a **Rights Respecting School**. This UNICEF campaign allows us to put human rights, and particularly children's rights at the heart of everything we do. From an early age our children are asked to consider the difference between "Needs" and "Wants". Our pupils are fully aware of the United Nations Convention of the Rights of the Child and know many of the articles in this document. We are recognised as a Level 2 Rights Respecting School, the **Gold Standard**.

Our work with the RRSA movement has proved a superb and tangible vehicle to support the Christian values of our school. More recently, it has enabled us to build our curriculum around the Global Goals so that our children can really fulfil our school Vision Statement. Please ask Miss Smith if you would like any further info or feel you could offer support in this area.

All children are actively encouraged to participate in and appreciate the Arts. Singing and music plays a huge part in our school, we sing every day and we appreciate the value and joy of expressing ourselves through song.

As a school we are striving to be Global Citizens, taking a particular interest in our local environment and further afield in our conservation projects including 'Coast to Coast' and 'The Chester Zoo Project'. We will be working closely with Chester Zoo and other schools and agencies to create a whole school arts project.

Within our music curriculum, children are introduced to a range of musical instruments. They also have opportunities to develop their listening and performance skills.

Outside of the curriculum, children in KS2 (Years 3 - 6) can take part in our school choir. There are no auditions - just enthusiasm required! These children perform at different concerts and festivals throughout the year. They also support whole school singing, in our assemblies and church services.

In Years 3 - 6 children can choose from a number of different musical instruments to learn with lessons from visiting peripatetic teachers (lessons are chargeable). These include string, piano, woodwind and percussion.

When appropriate, visits are arranged to concerts, local art galleries, historic houses etc, as part of the school day. Musicians also visit school on occasions to deliver performances and workshops with the children.

Dance plays a major part in our PE curriculum and children throughout the school are encouraged to express themselves through movement. Dance modules are often linked to the children's work in other subject, for example, Volcanoes in Year 4. Extra curricular dance clubs take place before and after school which include Maypole and Street Dance.

School Visits

In order to cover the costs of most school trips, we need to request voluntary contributions from parents. No child will be prevented from going on a visit, but all visits are dependent upon school receiving sufficient contributions. Payment for residential visits in Year 4 & 6, however, requires full payment. Should you have difficulty in meeting this cost, please discuss this with our headteacher.



St. Bridget's Buddies, Before and After School Club has been running since September 2019. The club uses a classroom not linked directly to a class that also has its own entrance.

- Before school child care starts at 7.45am to 8.50am after which children are taken to their classes.
- After school child care starts at 3.30pm to 5.45pm Monday to Thursday (Friday 5.30pm).

For more information, contact the manager: **Clair Redgrip** 07985 657578 - buddies@stbridgets.wirral.sch.uk

School Day

Things You Need To Know

These are kept to a minimum but are designed for the mutual benefit of all pupils. Children are informed of any rules that we feel the need to make.

Written copies of all rules are issued to families periodically and are always available in School.

The main points are:

1. School sessions: **Mornings: 8.45am - 12noon (KS1): 8.45am - 12.15pm (KS2)**
Afternoons: 1.10pm - 3.25pm (KS1): 1.15pm - 3.30pm (KS2)
(Children arrive between 8.50am and 9am)
Excluding assembly time and breaks, children are in class for 4.5 hours daily at KS1 & 4.75 hours at KS2.
2. No child may leave school premises without prior arrangement whilst school is in session. We would hope that necessary appointments could be made out of school hours as far as possible. Children must be collected from the office by a responsible adult and the appropriate form signed at this point. If they return to school on the same day after the appointment, the carer must bring the child back into school and re-register at the office.
No child should be left to come into school alone. This is to comply with Fire Regulations.
3. No child should arrive in school before 8.50am. Neither Wirral Borough Council, the governors nor the school staff will accept responsibility for any loss or injury sustained by your child on the premises before this time or after 3.40pm unless attending an organised 'pre' or 'after-school club', or if the carer is meeting with a member of staff.
Please note: Before and after school club details (see page 9)
4. All children should arrive punctually: **anyone arriving late must be accompanied by an adult, enter school through the main entrance and inform the office. The accompanying adult should sign in their child(ren),** again in order to comply with our fire regulations. **ALL VISITORS (INCLUDING PARENTS) TO SCHOOL MUST ENTER VIA THE MAIN ENTRANCE & REPORT TO THE OFFICE.**
5. School uniform (see Page 11) should be worn at all times and all clothing, bags, wallets, purses etc should be clearly named * named items are much more likely to be returned *.
6. **PLEASE INFORM SCHOOL IF YOUR CHILD HAS ANY MEDICAL PROBLEM - INCLUDING ASTHMA.**
Any medicines, apart from inhalers and epipens, must be kept safely in the school office where children should come at the stated time to receive them. An appropriate form will need to be completed by a parent/guardian - **not the childminder** - in order for this to be carried out. Special consideration will be given, at the discretion of the Headteacher to children with certain diseases (i.e. diabetes mellitus).
No-one in school is under any obligation to give any medicines or perform any associated tasks unless they are specifically employed to do so. All medicine (including inhalers and epipens) must be clearly labelled - and in date - and we are only able to give the named medicine to that particular child.
PLEASE BRING MEDICINES INTO SCHOOL ONLY WHEN ABSOLUTELY NECESSARY.
7. You are requested to notify the school office on the first day of your child's absence. A written letter of explanation (to the class teacher) is required on the day your child returns.
8. You are requested to avoid taking holidays in term time as it is disruptive to your child's education. All children receive holiday lists, duplicates are available in school and are on the school website and in the school prospectus. The school website calendar has up-to-date school information including; holiday dates, parents' evenings, sports' days and various other school dates. **Extra Guidance for parents** please consider these points;
The new National amendment from September 2013 states that; Headteachers may **not** grant any leave of absence during term time unless there are exceptional circumstances. Headteachers should determine the number of school days a child can be away from school if the leave is granted. Should this request not be granted, time taken will be classed as unauthorised absence and will automatically appear on the pupil's record and also affect our statistical report to the DCSF.
The completed form should be returned to school **prior** to the date for which the leave of absence is requested.
9. No sweets, toys, jewellery, or mobile phones/electronic devices (including smart watches) etc., may be brought to school unless special permission is given by the class teacher

School Uniform

We would be grateful if parents would endeavour to dress children in our school uniform.

Grey trousers - long or short trousers
Grey jumper or cardigan
White shirt or blouse

Grey pinafore dress or skirt
Royal blue, green & yellow tie**

Brown or black shoes **suitable** for school should be worn - with appropriate socks or tights. Trainers are **not** acceptable, **nor** are fashion shoes/boots. **No sandals or open toed shoes.**

FS2 CHILDREN

FS2 children can wear St Bridget's polo shirts instead of white shirt and tie **all year**.

SUMMER WEAR (after the Spring Break until October Half Term)

Pupils who wish to can wear a blue/white check or blue/white striped dress/culottes during the summer months.

Pupils may wear a short-sleeved, collar-attached white shirt or a St Bridget's polo shirt.

If a child is performing in our school orchestra, choir etc at a special event, we ask that appropriate school uniform is worn with a **long**-sleeved white shirt or blouse.

Parents of FS2 children are asked to purchase a **named** school bag to carry books etc home, these should be brought to school daily.

KS2 children can bring a **small** pencil case with pencils, crayons, pencil sharpener, ruler & rubber.

All children require:

1. Yellow **T-shirt** **
 2. Royal blue **shorts** **
 3. **Pumps** for PE
 4. **Short socks** to replace tights
- When necessary. Trainers may be worn for outside sporting activities.

In the junior years trainers **are essential**. A plain blue, black or grey tracksuit would be an advantage for cold weather. Football boots are **not** essential as substantial trainers will usually be sufficient.

5. A **PE bag (available from the Parents Association)** is essential to store these items as they are kept in school during term time if you require a new bag email:- stbridgetspa@gmail.com

EVERY ITEM SHOULD BE CLEARLY MARKED WITH YOUR CHILD'S NAME

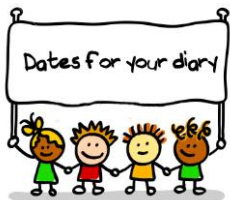
NO JEWELLERY MAY BE WORN FOR SPORTING ACTIVITIES - THIS INCLUDES EARRINGS*

- should this not be possible, plasters or tape *must* be used to cover the earrings for PE, games, sports, swimming etc.
- ** Available from Larry Adams, 7a Banks Road, WK. (0151 625 9424)



O
U
R
S
C
H
O
L





Wirral Metropolitan Borough School Term Dates 2021 - 2022

Autumn Term 2021

Open	Wednesday 1 September to Friday 22 October 2021
Half-term	Monday 25 October to Friday 29 October 2021
Open	Monday 1 November to Friday 17 December 2021
Christmas Holiday	Monday 20 December 2021 to Monday 3 January 2022

Spring Term 2022

Open	Tuesday 4 January to Friday 18 February 2022
Half-term	Monday 21 to Friday 25 February 2022
Open	Monday 28 February to Friday 8 April 2022
Spring break	Monday 11 April to Friday 22 April 2022

Summer Term 2022

Open	Monday 25 April to Friday 27 May 2022
May Bank Holiday	Monday 2 May 2022
Half-term	30 May to 3 June 2022
Open	Monday 6 June to Thursday 21 July 2022

Autumn Term 2022

Open	Monday 5 September to Friday 28 October 2022
------	----------------------------------------------

ST BRIDGET'S C OF E PRIMARY SCHOOL - INSET DAYS (*School Closed to Pupils*)

Wednesday 1st September 2021

Friday 22nd October 2021

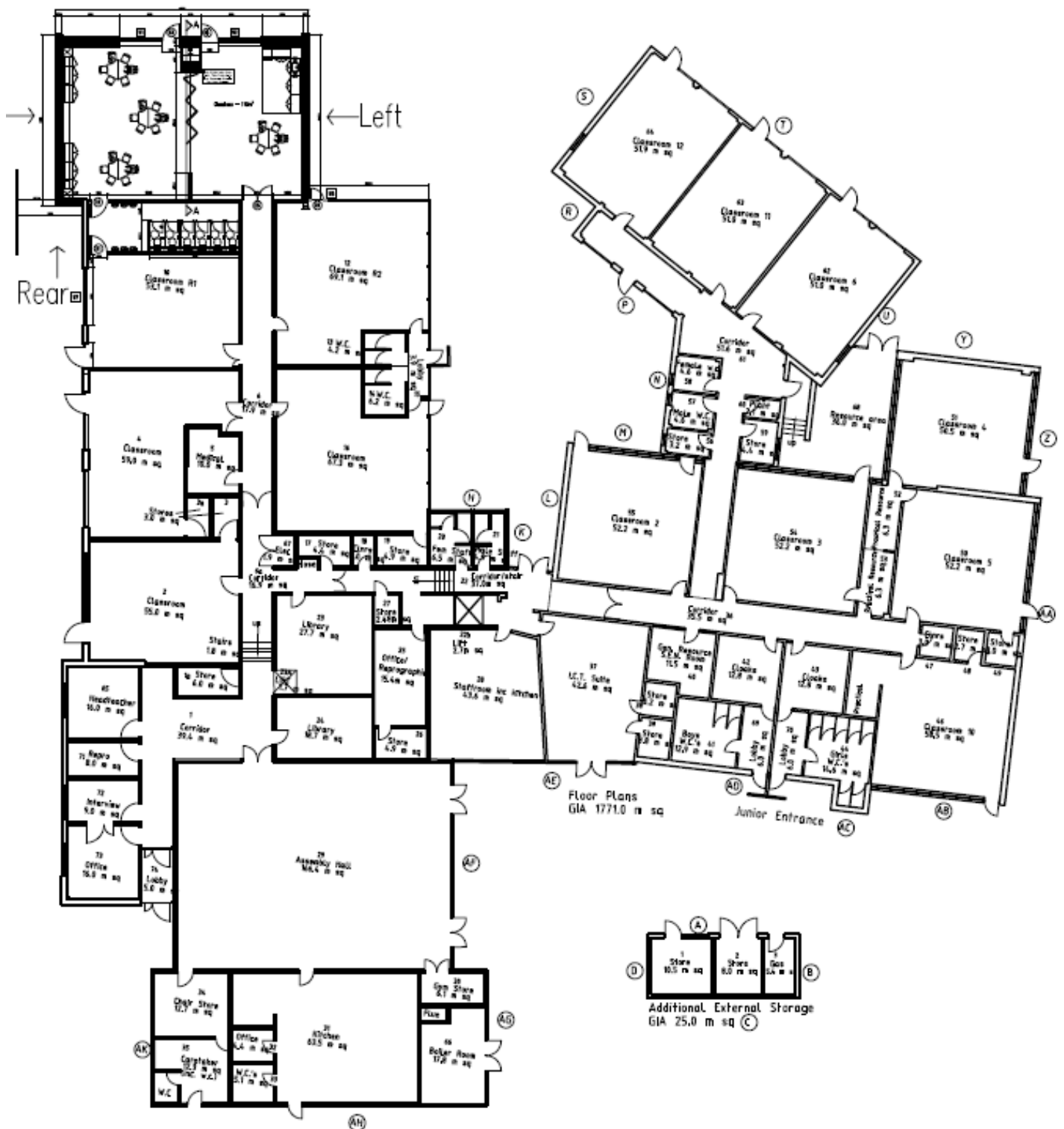
Monday 28th February 2022

Tuesday 4th January 2022

Friday 27th May 2022

Thursday 21st July 2022

Layout from September 2017



St Bridget's School Zone List



Our school catchment zone

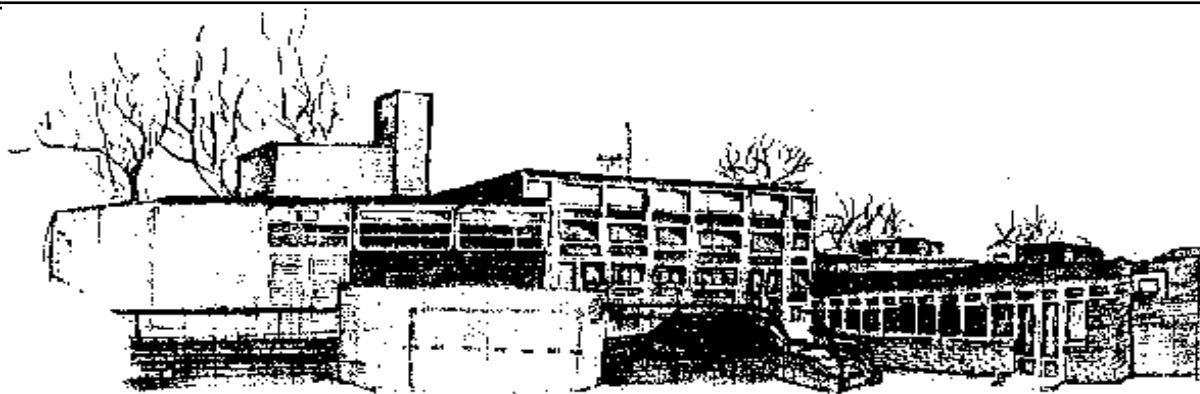
These roads (or parts of them) form the designated catchment area for our school, please see:

Wirral Primary school catchment area finder for exact roads and further information

<https://www.wirral.gov.uk/schools-and-learning/school-admissions/school-catchment-area-finder>

<p>Abbey Road Albert Road Alexandra Road Ashmore Close Ashton Drive</p> <p>Banks Road odd numbers 29 and above even numbers 92 and above Barton Hey Drive Beach Walk Beatty Close Boundary Road</p> <p>Caldy Chase Drive Caldy Road Caldy Wood Carisbrooke Close Carpenters Lane Cholmondeley Road Church Road Church Walk Croft Drive Croft Drive East Croft Drive West</p> <p>Davenport Close Devonshire Road Dunraven Road</p> <p>Eaton Road Echo Lane Egerton Drive</p> <p>Fleck Lane</p> <p>Grosvenor Avenue</p>	<p>Headland Close Heatherleigh Hilbre Court Hilbre Road Hilbre View (<i>only this part of Grange Road</i>) Holm Hill Hydro Avenue</p> <p>Jellicoe Close</p> <p>Kale Close Kings Drive Kings Drive North Kirby Close Kirby Mount Kirby Park</p> <p>Links Hey Road Long Hey Road Ludlow Drive</p> <p>Macdona Drive Madeley Close Madeley Road Melloncroft Drive Melloncroft Drive West Mereworth Mill Hey Road Monks Way Mostyn Avenue Mount Road</p> <p>Norfolk Drive</p> <p>Pikes Hey Road Princes Avenue Priory Road</p>	<p>Rectory Road Riverside Rubbing Stone</p> <p>Sandy Lane Shore Road Shrewsbury Road Simonsbridge South Parade (inc Hilbre Court) odd numbers 63 and above South Road Stonehey Drive St Bridget's Lane Surrey Drive</p> <p>Telegraph Road:- from Caldys Cross Roads to the Cottage Loaf The Fairways The Finney The Green The Kirklands The Oatlands Thorsway Townfield Road</p> <p>Victoria Road Village Road</p> <p>Warwick Drive Westbourne Road even numbers 32 and above odd numbers 49 and above Westward Ho Wetstone Lane</p> <p>York Avenue</p>
------------------------------------------------------------------------------------------------------------------------------------------------------------------------------------------------------------------------------------------------------------------------------------------------------------------------------------------------------------------------------------------------------------------------------------------------------------------------------------------------------------------------------------------------------------------------------------------------------------------------------------------------------------------------	------------------------------------------------------------------------------------------------------------------------------------------------------------------------------------------------------------------------------------------------------------------------------------------------------------------------------------------------------------------------------------------------------------------------------------------------------------------------------------------------------------------------------------------------------------------------------------------------------------------------------------------------	----------------------------------------------------------------------------------------------------------------------------------------------------------------------------------------------------------------------------------------------------------------------------------------------------------------------------------------------------------------------------------------------------------------------------------------------------------------------------------------------------------------------------------------------------------------------------------------------------------------------------------------------------------------------------------------------------------------------------

St Bridget's School History



A drawing of our school, building in 1968 - as seen from the junior playground

St Bridget's C of E Primary school is closely connected with the Parish Church of West Kirby. As a **controlled school**¹ it has have a fixed **catchment area**². The school has sole use of the field opposite the school gates and the old Rectory.

The present building, completed in 1968, is the fifth school on this site. The original school, dating back to 1825, was built onto the church. The benefit of church schools is the close link that they forge with the parish church and the family feeling that prevails. It is hoped that this early link will help the children in later life. At this time, St Bridget's School was built as a one-form entry (3 infant and 4 junior classes), but since 1968 various additions have appeared. School numbered approximately 210 children in this year.

In 2009 two classes were added to the main site so there was no longer a need to have two classes in the new Church Centre. At this point there were 14 classrooms (most of the classes are housed in the main building). Class 3 was taught in the mobile classroom in the infant playground.

In 2017 the mobile class was knocked down and two new classrooms for the reception classes were built. School pupil numbers this year were 430.

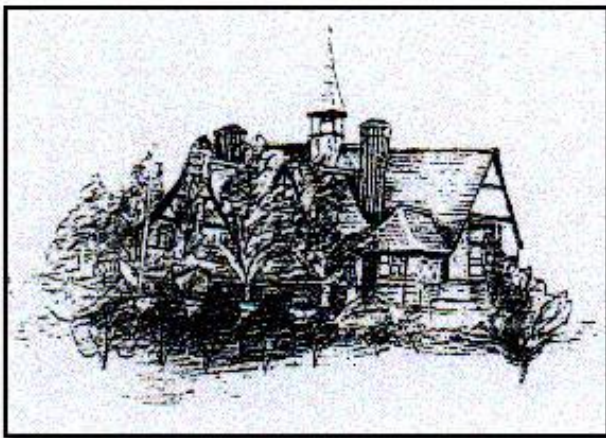
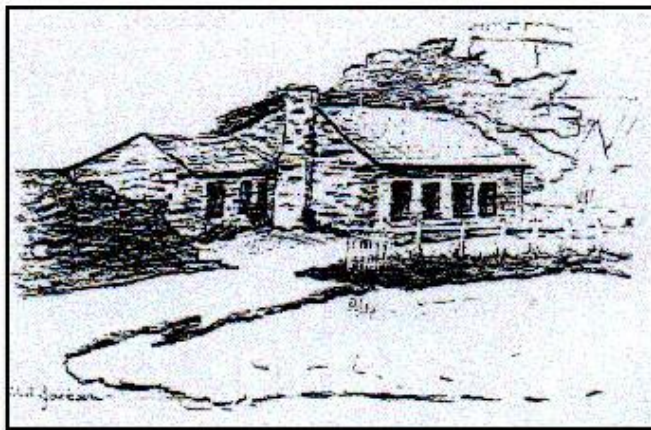
1. A Controlled Church of England School (no less than an Aided Church of England School) is a church school functioning within the partnership of the church and the local authority. Its Christian nature is an important aspect of the school life, the religious teaching is mainly in accordance with the agreed syllabus, but this may be supplemented by specific church teaching. Worship at its assemblies is linked with the worship of the church, in accordance with the provision of its Trust Deed. Under Section 9 of the 1988 Act concerning pupils' attendance at religious worship or education, the school will respect the rights of parents should they wish to exercise their entitlement to withdraw children from religious worship or education. These children will be able to read in the library adjacent to the hall.

St Bridget's Schools



The original St Bridget's School dates back to 1825 and was attached to the west end of the north side of the church, near the tower. This was used as a schoolroom until 1848, when the "Old School" was built. The outline is still visible.

This "Old School" was used as a village school from 1848 until 1864.



This is the predecessor to the current school and was opened on June 4 1885. An infant section was built in 1899 and the school remained in use until 1968

St Bridget's C of E Primary School

Privacy Notice

Our full Privacy Notice is available on the school website at:

https://st-bridgets.eschools.co.uk/website/policies_/379459



ST BRIDGET'S
CHURCH OF ENGLAND (CONTROLLED)
PRIMARY SCHOOL



St Bridget's Lane
West Kirby
Wirral
Merseyside
CH48 3JT
England

Tel: 0151 625 7652
Fax 0151 625 3160

E-mail address: - schooloffice@stbridgets.wirral.sch.uk
School Website/VLE: <http://st-bridgets.eschools.co.uk>